



KERALAM MUSEUM OF HISTORY & HERITAGE (IMCK)

Park View, Thiruvananthapuram-33

(Nodal agency of museums under all the Departments and
institutes functioning under the control of Govt. of Kerala)

Website: www.museumkeralam.org, Email: info@museumkeralam.org

Phone: 0471-2320231, +91-9188847937

No.KIM/883/2022

Date .04.03.2024

REQUEST FOR PROPOSAL

Selection of Museum Consultancy Firm for Setting up of a Museum of Sopana Sangeetham at Makreri Temple, Kannur

Request For Proposal is invited by Interactive Museum of Cultural History of Kerala (Keralam Museum of History and Heritage) from the Empanelled/Non Empanelled, reputed, experienced, and competent Consultancy Firms for **“Setting up of a Museum of Sopana Sangeetham at Makreri Temple, Kannur”**. The Non- Empanelled and empanelled firms should furnish company details and other required data within the prescribed format and should get pre-qualification before fixing the bid. The details relating to the nature and scope of the project, eligibility criteria, terms and conditions and other information relating to the Request For Proposal are as detailed below.

Sd/

Executive Director

Interactive Museum of Cultural History of Kerala
(Keralam Museum of History and Heritage)

Setting up of a Museum of Sopana Sangeetham at Makreri Temple, Kannur

Introduction

Traditional songs are an integral part of daily life of any society. Usually they are performed to accompany particular activities associated with work, religious celebrations or social occasions. They are usually called as folk song. Most traditional and Folk songs change over time as they are passed from person to person many variants of the same song or tune after spring up.

The Sangeetham or music is deeply involved with the rituals and ceremonies of the temples in Kerala besides being a part of the religious festivities of the people. Sopana Sangeetham is the traditional music of Kerala that is based on ragas of the Indian Vedic tradition beautifully mingled with indigenous tribal and folk elements.

It is planning to set up a museum on Sopana Sangeetham attached with the famous Makreri Temple at Kannur, as a part of Thalassery Heritage Project.

Vision:

Music has the power to create an emotional journey within us of space and time. Music being a listening experience over the years had led to the incorporation of this music tradition to their performing art forms which led to the wide spread popularity and acceptance in every sect of society.

Sopana Music is the traditional and typical age-old music form of Kerala with a hoary past. The recital of the Sopana Music is meant for creating an atmosphere of Bhakthi within the temple premises and at the same time invoking a mood of devotion in the mind of devotees.

The aim of the museum is to make the visitor understand the concept and significance of Sopana Sangeetham in correlation to the development and relevance of this genre of music and which in turn can help in nurturing it to an internationally and widely accepted music.

Proposed Theme of Museum

Gallery 1: Temples and Temple Music

- ❖ Makreri Subrahmanya Temple
- ❖ V. Dakshinamoorthy Swami – a tribute
- ❖ Makreri Temple – Thyagaraja – Music Festival
- ❖ Sopana Sangeetham – A happy blending of Vedic, Folk & Tribal music
- ❖ Trail blazer of Sopana Sangeetham – Progressive development of Sopana Sangeetham through great personalities

Gallery 2: Sopana Sangeetham

- ❖ Features of Sopana Sangeetham
- ❖ Structure of Sopana Sangeetham
- ❖ Sopana Sangeetham – Its identify Ragas
- ❖ Onset of Rhythms
- ❖ Instruments used
- ❖ Sopana Sangeetham – Presentation format

Gallery 3: Story of Sopana Sangeetham

- ❖ Genesis History of Music Traditions in Kerala
- ❖ Temple Art Forms – Instruments
- ❖ Characteristics of Sopana Sangeetham
- ❖ Journey of Sopana Sangeetham through different art forms
- ❖ Musical elements of performance
- ❖ Influence of Sopana Sangeetham in other Sects/Religions, mother goddess, Christianity etc.
- ❖ Story of Sopana Sangeetham – Tamil influence

Eligibility Criteria For Application

Those who are including Empanelled/Non Empanelled firms should attend the **Pre-bid meeting**.

Pre-bid meeting date – 11.03.2024_ Time – 11 am Medium of meeting –

Offline/Online (Zoom/Google meet)

Non Empanelled/Empanelled firms who are willing to participate in the Request Of Proposal shall submit their Firm details (General qualification) as described below on /before **05.04.2024**. They will be informed the eligibility before the Pre-bid meeting. Consultants/Firms attending the Pre-bid meeting will get more details about nature and scope of the project, eligibility criteria, terms and conditions and other information relating to the Request For Proposal. Those who wants to participate in the bid shall pay Rs 5000/- by way of DD drawn in the name of Executive Director, Interactive Museum of Cultural history of Kerala towards cost of documents along with Bid documents in separate cover.

General Qualifications for not empanelled with Keralam Museum

1. The details of minimum 3 years experience in the Museum related works.
2. The details of minimum turnover of 2 crore in last 2 years.
3. The details of completed work with Project cost in last 3 years – Minimum value of project 5 crores.
4. The firm should have a consortium containing the following Technical persons.
 - a. Curator
 - b. Museum designer
 - c. Historian with sufficient experience in said subject
 - d. Implementation team with minimum 5 years experience
 - e. Graphic Designer
 - f. MEP consultant
 - g. Other experts

Kindly submit the testimonials proving qualifications of the above persons

1. Technical bid - Evaluation

1. History of the Firm – Turn over, when established, full time staff etc

Total - 20 Marks

Up to 3year - 10 marks

Up to 5year - 15 marks

Above 5 year - 20 marks

2. Technical competence – Details of projects done, similar projects executed

Total - 20 Marks

Works executed up to 2crore/2year - 10 marks

Works executed up to 3crore/2year - 15 marks

Works executed above 3crore/2year - 20marks

3. Specific experience - Experience in setting up museums or galleries, experience in Kerala

Total - 30 Marks

1 Work - 10 marks

3 Works - 20 marks

More than 3 Works - 30 marks

4. Understanding of this project brief – a note on their understanding and approach

Total – 30 Marks

The marks shall be given on evaluation of understanding the project brief.

The Marks secured out of 100 will be converted to out of 40 marks. The Technical bid of ALL the firms should be evaluated against total marks of 100. Empanelled firms should also submit the full technical bids.. The firm/company who secure at least 50 % of score in the evaluation will be treated as qualified for Technical presentation.

2. Technical Presentation

Eligible candidates can participate in the presentation after qualifying Technical bid evaluation.

Medium of Presentation – Offline / Online (Zoom/Google meet)

The technical presentation should be entirely based on the design already prepared.

20 marks - Understanding the brief

20 marks - Respecting the historicity of the building and demonstrative adaptive reuse

20 marks – Understanding the Design flow/strength

20 marks - Economics of design

20 marks - Confidence in executing

Total marks = 100 marks

Awarded marks out of 100 will be converted to out of 30 marks. The firm/company who secure at least 50 % marks (15/30) will be treated as qualification for submitting financial bid.

Those who secure 50% marks in technical bid evaluation and technical presentation shall be eligible for opening the financial bid. The financial bid of those are not eligible shall not be opened for competition.

3. Financial Bid

The Financial bid should be based on the design and estimate already prepared

Estimate Amount = ₹. 1,61,22,306 + GST

a)The bidder who secure at least 50% of score in the technical presentation will be treated as technically qualified.

- b) The Financial Bids of the technically qualified bidders will be opened on the prescribed date in the presence of the bidder or their representatives who are authorized by bidder.
- c). The lowest financial bidder (L1) will be awarded 100% score.
- d) Financial Scores for other than L1 bidders will be evaluated using the following formula:
- $$\text{Financial Score of a Bidder} = \left\{ \left(\frac{\text{Financial Bid of L1}}{\text{Financial Bid of the Bidder}} \right) \times 100 \right\} \% \text{ (Adjusted to two decimal places)}$$
- e) Only fixed price financial bids indicating total price for all the services specified in this bid document will be considered.
- f) The bid price will include all taxes and levies and shall be in Indian Rupees.
- g) Errors & Rectification: Arithmetical errors will be rectified on the following basis: “If there is a discrepancy between the unit price and the total price that is obtained by multiplying the unit price and quantity, the unit price shall prevail and the total price shall be corrected. If there is a discrepancy between words and figures, the amount in words will prevail”.

Combined Evaluation of Technical bid, presentation & Financial Bids

- a) The technical bid, presentation and financial scores secured by each bidder will be added using weightage of 40 for technical evaluation, 30 for presentation and 30 for financials respectively to compute a Composite Bid Score.
- b) The bidder securing the highest Composite Bid Score will be declared as the Best Value Bidder for award of the Project.
- c) In the event of the bid, if the composite bid scores are ‘tied’, the bidder securing the highest technical score will be declared as the Best Value Bidder for award of the Project.

- d). The successful bidder has to provide a letter of acceptance to Interactive Museum of Cultural History of Kerala (Keralam Museum of History and Heritage, Trivandrum) within seven days of receiving communication about his/her selection from the Department.
- e). The successful bidder shall to sign an agreement with payment schedule at the time of award of the work.
- f). Keralam Museum of History and Heritage reserves all the rights to accept or reject any/all Request For Proposal applications, without assigning any reason. The Department takes no responsibility for the delay, loss or non-receipt of any submission or letter sent by post, within the prescribed time period.

Conditions and Notes

- Completion of work is 6 months
- Cost of RFP document mentioned above should be in the form of separate Demand Draft in favour of Executive Director Interactive Museum of Cultural History of Kerala, Trivandrum
- Excess over estimate/ below estimate rate shall be allowed by the committees constituted for Museum setting works if necessary.
- DPR details will be available in the Keralam Museum at the Office time. You can contact directly for getting details of the project.
- The drawings and estimates are separately attached along with documents
- The presentation should be entirely based on the design already prepared.
- The Financial bid should be based on the design, drawing and estimate already prepared
- If the mentioned brand and model equipments is not available in the market, other brands with the equivalent specification can be used at their present market rate
- The successful bidder should engage a full time works Supervisor having enough experience in the field nominated through Keralam Museum.
- All bidders should fill their rate/Amount of the item/specification in the prescribed schedule sheet issued in ink or separate typed sheets.

- Lumsum (LS) works enclosed in the estimate can be finalized as per work executed on consulting with Keralam Museum

Application / Request For Proposal in sealed cover with complete details in all respects and superscribed as Selection of Museum Consultancy Firm for Setting up of a Museum of Sopana Sangeetham at Makreri Temple, Kannur shall be submitted at the following address. A soft copy of Presentation shall be sent along with this application. Interested consultants/ consortia of consultants can download the Request For Proposal documents from the website www.museumkeralam.org. The last date for receipt of application (hard copy) is **before 4 pm on 05.04.2024** and date of presentation is fixed on **09.04.2024 at 10.30 AM in Keralam Museum**

**The Executive Director
Interactive Museum of Cultural History of Kerala
(Keralam Museum of History and Heritage), Park
View Vikas Bhavan P.O,
Trivandrum – 695033.**

MAKRERI TEMPLE- SOPANA SANGEETHAM MUSEUM

No	Item	Units	Quantity	Rate	Amount
Galleries					
1	Base for the display - made of BWP 710 grade 12MM - 18 MM calibrated plywood framework with combination of 12mm thick BWP 710 grade calibrated plywood cladded with 1mm thick laminate finish	sqm	472.186		
2	MS rectangle pipe 40 x 60mm with powder coating being the vertical supports behind the display panel with 6mm thick fixing plates of appropriate dimensions	kg	1083.3		
3	Graphics Printing for Backlit print & Structure, Vinyl Print with matte lamination, Floor graphics ,3D Print ,PVC /HDF cutouts with spray paint finish	sqm	303.16		
2 AUDIO VISUAL EQUIPMENTS					
1	Content integration for AV Experience, Design, Installation and Testing and commissioning	job	1		
2	Supply and instating branded items including materials, labour, carriage, loading ,unloading etc. to complete with all accessories Media Player with Hand Guesture Tracking sensor Play's video content activation and navigation by hand tracking gesturesBBAV/BS Item brand should be get approved by the implementing agencies i.e. IMCK with Department authorization	no	1		
3	Supply and instating branded items including materials, labour, carriage, loading ,unloading etc. to complete with all accessories Parabolic Sound Dome Directional SpeakerBrown Innovations / Item brand should be get approved by the implementing agencies i.e. IMCK with Department authorization	no	4		
4	Supply and instating branded items including materials, labour, carriage, loading ,unloading etc. to complete with all accessories 85" 4K UHD LED Display Panel Supports 16/7 Operation Hours. Item brand should be get approved by the implementing agencies i.e. IMCK with Department authorization	no	4		
5	Supply and instating branded items including materials, labour, carriage, loading ,unloading etc. to complete with all accessories Content integration for AV Experience	no	10		

6	Supply and instating branded items including materials, labour, carriage, loading ,unloading etc. to complete with all accessories Museum Standard Vandal resistant single cup headphones .Item brand should be get approved by the implementing agencies i.e. IMCK with Department authorization	no	11		
7	Supply and instating branded items including materials, labour, carriage, loading ,unloading etc. to complete with all accessories HD Solid State Media Player - Play's video content activation and navigation by senssing ofHand of visitors 2nos of hand waves sensors.Item brand should be get approved by the implementing agencies i.e. IMCK with Department authorization	no	12		
8	Supply and instating branded items including materials, labour, carriage, loading ,unloading etc. to complete with all accessories 43" Wall mount Kit	no	8		
9	Supply and instating branded items including materials, labour, carriage, loading ,unloading etc. to complete with all accessories 43" 4K UHD LED Display Panel Supports 16/7 Operation Hours. Item brand should be get approved by the implementing agencies i.e. IMCK with Department authorization	no	9		
4 LIGHTING					
1	Supply and instating branded items including materials, labour, carriage, loading ,unloading etc. to complete with all accessoriesMNL Model Name : MOH150BL40 Input Power : 150W Color Temp : 4000K Dimension: 1200mm(Dia) x 70mm(H) Cable Length : 1500mm Beam Angle : 110° Body Color: Black Warranty : 5 Years,IP 40 CRI 83,Constant Current 	no	1		
2	Supply and instating branded items including materials, labour, carriage, loading ,unloading etc. to complete with all accessoriesMNL Linea 52 Size 52 X 75 X Dia - 2510mm Finish - Black ustom Suspen ded Linear light Color Temp : 3000 K Warranty : 5 Years 	no	1		
3	Supply and instating branded items including materials, labour, carriage, loading ,unloading etc. to complete with all accessoriesMNL Suspended Linear light Size 52 X 75 X 4700 mm Finish : Black Color Temp : 3000 K Warranty : 5 Years 	no	1		

4	Supply and instating branded items including materials, labour, carriage, loading ,unloading etc. to complete with all accessoriesAVL Adjesto SIZE- D85MM X H80MM Finish - Black ,12 W 3000 K 	no	25		
5	Supply and instating branded items including materials, labour, carriage, loading ,unloading etc. to complete with all accessoriesMNL Model Name : PLB1030 Input Power : 10W Color Temp : 3000k Dimension: Ø47X H-105mm (WITH LENS AT 33° - Ø47X H-174mm) (WITH LENS AT 23° - Ø47X H-194mm) Cut Out Dia: 195 x 95mm Beam Angle : 23° to 33° (Adjustable Lens),Body Color: Black,Warranty : 5Years,IP20,CRI 90 	no	20		
6	Supply and instating branded items including materials, labour, carriage, loading ,unloading etc. to complete with all accessories AVL Tino Spot D48MM X H95MM Finish - Black ,12 W 3000 K 	no	40		
7	Supply and instating branded items including materials, labour, carriage, loading ,unloading etc. to complete with all accessories AVL CONNECTOR	no	25		
8	Supply and instating branded items including materials, labour, carriage, loading ,unloading etc. to complete with all accessories AVL 1 / 2 Mtr Track	no	51		
5 SIGN BOARD & FRAME WORK					
1	Providing and fixing powder coated aluminium work (minimum thickness of powder coating 50 micron) consisting of tee /angle sections, of approved make conforming to IS : 733 in frames of false ceiling including aluminium angle cleats with necessary C.P brass/ stainless steel sunk screws, aluminium perimeter angles fixed to wall with stainless steel rawl plugs @ 450 mm centre to centre and fixing the frame work to G.I level adjusting hangers 6 mm dia. with necessary cadmium plated machine screws all complete as per approved architectural drawings and direction of the Engineer-in-Charge (level adjusting hangers, ceiling cleats and expansion on hold fasteners to be paid for separately)	kg	650		

2	Cleaning the sand stone surface and removing dirt, dust , bird dropping, grease, oil, algae, fungus, monkey beats, vegetable growth etc., including providing, applying and washing the surface with liquid Ammonia Chemical of 5% solution and other chemical cleaning agent as approved by Archaeological Survey of India / Engineer - in-charge, of approved brand and manufacturer, with the help of required scrubbers and also cleaning with machine operated water jet mixed with desired quantity of fine silica where ever required, without causing any scratching/ damage to the stone surface and finally washing the surface with clean water with the help of pressure jet machine, complete in all respect, including taking all precautions to safeguard ventilators, windows, doors etc. by suitable covering so as to avoid any damage to the building / structure, all as per direction of Engineer-in- Charge (The rate is inclusive of all materials & labours involved except scaffolding).	sqm	359.042		
3	Structural steel work in single section, fixed with or without connecting plate, including cutting, hoisting, fixing in position and applying a priming coat of approved steel primer all complete.	kilogram	300		
4	TITLE card in suitable materials and finish as per direction of imck	each	58		
5	Providing and fixing Gallery names & other wayfinding signages 6mm laser cut white acrylic thick 3 + 3 mm yellow laser cut letters through cut 6mm thick laser cut orange acrylic letters pushed in the laser grooves. All the acrylic surfaces are duly painted with PU acrylic paints. The signages are fixed to the ceiling with Stainless steel ceiling fitting, Stainless steel rods, and with Stainless steel connectors	sqm	18		
6 R & D					
2	FINAL OBJECT DISPLAY & LIGHTING ADJUSTMENT - Based on the available approved illustrations and DPR, object and labels fixed display surface with directions of technologist, technocrats, technician ensure conservation aspect of object and musicological rules & regulations, ensure object holding strength and durability. Re- check and commissioning entire display with all aspect of museum and get approval from nodal agency expert wing. It included all charges of technologist, technocrats, technician, skilled labour and matetrial	sqm	120		

3	THEME CREATING WORKS- Based on the available approved illustrations and DPR, object display space analysis and finalized position of object –based on size and shape of object, theme flow, rhythm, uniformity, texture, viewer visibility, lighting effect, conservation aspect of object and musicological norms & regulation (Enclosed space temperature, humidity etc.....) its included all charges of technologist, technocrats, technicians, skilled labours	sqm	130		
7 UPS					
1	Supply and Installation of 10 KVA Stand Alone UPS APC online UPS with 3 phase in and out. 16 nos of 26 AC Exide SMF batteries, racks and interlinks as required. I. tem brand should be get approved by the implementing agencies i.e. IMCK with Department authorization	each	1		
8 ELECTRICAL WORK					
1	Wiring for light point/ fan point/ exhaust fan point/ call bell point with 1.5 sq.mm FRLS PVC insulated copper conductor single core cable in surface / recessed steel conduit, with piano type switch, phenolic laminated sheet, suitable size MS box and earthing the point with 1.5 sq.mm. FRLS PVC insulated copper conductor single core cable etc as required. Group C	point	122		
2	Wiring for light/ power plug with 2x4 sq.mm FRLS PVC insulated copper conductor single core cable in surface / recessed steel conduit along with 1 No 4 sq. mm FRLS PVC insulated copper conductor single core cable for loop earthing as required.	metre	20		
3	Wiring for circuit/ sub main wiring along with earth wire with the following size of FRLS PVC insulated copper conductor, single core cable in surface /recessed steel conduit as required 2*2.5 sqmm +1*2.5sqmm earth wire	metre	30		
4	Wiring for circuit/ sub main wiring along with earth wire with the following sizes of FRLS PVC insulated copper conductor, single core cable in surface/ recessed steel conduit as required 2x4 sq.mm + 1x4 sq.mm earth wire	metre	30		
5	Wiring for circuit/ sub main wiring along with earth wire with the following sizes of FRLS PVC insulated copper conductor, single core cable in surface/ recessed steel conduit as required 4 X 4 sq. mm + 2 X 4 sq. mm earth wire	metre	35		
6	Wiring for circuit/ sub main wiring along with earth wire with the following sizes of FRLS PVC insulated copper conductor, single core cable in surface/ recessed steel conduit as required 4 X 6 sq. mm + 2 X 6 sq. mm earth wire	metre	22		

7	Supplying and drawing following sizes of FRLS PVC insulated copper conductor, single core cable in the existing surface / recessed steel/ PVC conduit as required.3 X 1.5 sq.mm	metre	240		
8	Supplying and drawing following sizes of FRLS PVC insulated copper conductor, single core cable in the existing surface / recessed steel/ PVC conduit as required.3 x 2.5 sq. mm	metre	160		
9	Supplying and drawing following sizes of FRLS PVC insulated copper conductor, single core cable in the existing surface / recessed steel/ PVC conduit as required.3 x 4 sq. mm	metre	80		
10	Supplying and fixing of following sizes of steel conduit along with accessories in surface/recessincluding painting in case of surface conduit, or cutting the wall and making good the same incase of recessed conduit as required.20 mm	metre	240		
11	Supplying and fixing of following sizes of steel conduit along with accessories in surface/recessincluding painting in case of surface conduit, or cutting the wall and making good the same incase of recessed conduit as required.25 mm	metre	120		
12	Supplying and fixing of following sizes of steel conduit along with accessories in surface/recessincluding painting in case of surface conduit, or cutting the wall and making good the same incase of recessed conduit as required.50 mm	metre	60		
13	Earthing with G.I. earth pipe 4.5 metre long, 40 mm dia including accessories, and providingmasonry enclosure with cover plate having locking arrangement and watering pipe etc. withcharcoal/ coke and salt as required	set	2		
14	Supplying and fixing following way, single pole and neutral, sheet steel, MCB distribution board, 240 V, on surface/ recess, complete with tinned copper bus bar, neutral bus bar, earth bar, din bar, interconnections, powder painted including earthing etc. as required. (But without MCBIRCCB/Isolator2+6 way, Double door	each	2		
15	Supplying and fixing of following ways surface/ recess mounting, vertical type, 415 volts, TPN MCB distribution board of sheet steel, dust protected, duly powder painted, inclusive of 200 amps tinned copper bus bar, common neutral link, earth bar, din bar for mounting MCB's (butwithout MCB's and incomer) as required .(Note : Vertical type MCB TPDB is normally used where 3 phase outlets are required.)12 way (4 + 36), Double door	each	1		

16	Supplying and fixing of following ways surface/ recess mounting, vertical type, 415 volts, TPN MCB distribution board of sheet steel, dust protected, duly powder painted, inclusive of 200 amps tinned copper bus bar, common neutral link, earth bar, din bar for mounting MCB's (but without MCB's and incomer) as required .(Note : Vertical type MCB TPDB is normally used where 3 phase outlets are required.)8 way (4 + 24), Double door	each	1		
17	Supplying and fixing following way prewired SP&N MCB distribution board of steel sheet for 240 volts on surface/ recess complete with loose wire box, terminal connectors for all incoming and outgoing circuits, duly prewired with suitable size FR PVC insulated copper conductor up to terminal blocks, tinned copper bus bar, neutral link, earth bar, din bar, detachable gland plate, interconnections, powder painted including earthing etc. as required. (But without MCB/ RCCB/Isolator)2+12 way, Double door	each	1		
18	Supplying and fixing 5 amps to 32 amps rating, 240/415 volts, "C" curve, miniature circuit breaker suitable for inductive load of following poles in the existing MCB DB complete with connections, testing and commissioning etc. as required.Single pole	each	2		
19	Supplying and fixing 5 amps to 32 amps rating, 240/415 volts, "C" curve, miniature circuit breaker suitable for inductive load of following poles in the existing MCB DB complete with connections, testing and commissioning etc. as required.Double pole	each	4		
20	Supplying and fixing following rating, double pole, 240 volts, isolator in the existing MCB DB complete with connections, testing and commissioning etc. as required.40 amps	each	2		
21	Supplying and fixing following rating, four pole, 415 volts, isolator in the existing MCB DB complete with connections, testing and commissioning etc. as required.100 amps	each	1		
22	Supplying and fixing following rating, double pole, (single phase and neutral), 240 V, residual current circuit breaker (RCCB), having a sensitivity current 30 mA in the existing MCB DB complete with connections, testing and commissioning etc. as required.40 amps	each	2		

23	Supplying and fixing following rating, double pole, (single phase and neutral), 240 V, residual current circuit breaker (RCCB), having a sensitivity current 30 mA in the existing MCB DB complete with connections, testing and commissioning etc. as required.63 amps	each	62		
	9 SPLIT AIR CONDITIONER 5 STAR RATING (NON INVERTER TYPE)				
1	Air-condition -split air conditioner 5 star rating item brand should be get approved by the implementing agencies ie IMCK with Department authorization	each	3		
	10 Illustrations, Panel design, Content in Malayalam and English				
1	"CONTENT IN MALAYALAM AND ENGLISH: Based on DPR and illustration derive text content carve data and information of object, it may embellished by many pictograms, diagrams, and illustrations that may be more interest in museum visitor " 	Day	60.073		
2	"PANEL DESIGN: Based on the illustration developed display surface with geometry, size, pattern, colour suitable rhythm of museum display " 	sqm	129.174		
3	ILLUSTRATE:As per the DPR collect object literature from local, reference text, metamorphic character, mode of evolution all in full extent of object relate study and in incorporate briefing of text 	Day	60.634		
	11 Artifacts / Image sourcing / Purchasing / developing replicas / videos				
1	Videos: AS PER THE DPR made videos that contain details about the objects and their significance 	hour	54.501		
2	"Purchasing: PURCHASING/accruing display object, after valuation, authority of object " 	each	28.32		
3	Develop replicas: MakPe miniaturRe of objects flor this dCevolved deEtailed procedure ,required consummate skill and patience of artist 	Day	40.973		
4	Artifacts and Image sourcing: AS per the theme generate the symbolized diagrams object effectively, by making or publishing of copyright etc. 	Day	77.155		
	TOTAL				

Client : DEPARTMENT OF TOURISM,
GOVT. OF KERALA

Project title	: MUSEUM AT MAKRER TEMPLE
---------------	------------------------------

Circuit : CULTURAL CIRCUIT

Drawing Title : WORKING DRAWING

JOINERY SCHEDULE							
TYPE	SIZE	SILL	LINTEL	TYPE	SIZE	SILL	LINTEL
D01	120X210	-	210	D04	80X210	-	210
D02	100X210	-	210				

WINDOW							
W02	60X100	110	210				
W01	80X100	110	210				
W03	120X100	110	210				
W04	120X120	90	210				
W05	370X165	45	210				
PW	1020X80	130	210				
PW1	360X80	130	210				
PW2	490X80	130	210				

AREA CALCULATION	
FLOOR	AREA(M ²)
GROUND FLOOR	186.32 sqm
FIRST FLOOR	106.52 sqm
TOTAL	292.84 sqm

REVISIONS	REV-NO	DATE	DESCRIPTION
	01	09-09-2021	
	02	04-11-2021	revised as per vaasthu

1	All the wall thicknesses are 23cms and 13 cms (Unless Specified)
2	All the levels marked in the dwg are finished levels
3	Refer structural drawings for structural details
4	Follow architectural dwgs for dimensions, levels and details.
5	All Dimensions are in cm's
6	All Dimensions to be checked at site. No dimension to be scaled off from drawings only written dimensions to be.
7	This dwg is final as on date. All previous dwgs similar to this stand cancelled.
8	Any discrepancies in the drawing shall be brought to the notice of the consultants and corrected before execution.

SCALE	1:100
DATE	04-11-2021
PROJECT NO	THP/MP/PC/08/01
DRAWING NO	AR-300,301
DRAFTED BY	SUHARA
CHECKED BY	Ar SANAK

© this drawing is the property of space art and de earth and is not to be copied or used without their permission.

SIGNATURE OF ARCHITECT

 **SPACE ART**
Architecture & Responsible Tourism
Golf link road, Pachakkil, Malaparamba P.O, Calicut-9
Ph: 0495 2370290
E-mail : mail@spaceart.org.in

culture. create. belong.

de earth

RAGAM APARTMENT, PIPE LINE ROAD PATTERY
CALICUT-16 . PH:0495 2741782.



Project: **MASTER PLAN
THALASSERY HERITAGE PROJECT**

Client : **DEPARTMENT OF TOURISM,
GOVT. OF KERALA**

Project title : **MUSEUM AT MAKRERI
TEMPLE**

Circuit : **CULTURAL CIRCUIT**

Drawing Title : **WORKING DRAWING**

JOINERY SCHEDULE

TYPE	SIZE	SILL	LINTEL	TYPE	SIZE	SILL	LINTEL
D01	120X210	-	210	D04	80X210	-	210
D02	100X210	-	210				

WINDOW

W02	60X100	110	210				
W01	80X100	110	210				
W03	120X100	110	210				
W04	120X120	90	210				
W05	370X165	45	210				
PW	120X80	130	210				
PW1	360X80	130	210				
PW2	490X80	130	210				

AREA CALCULATION

FLOOR	AREA(M ²)
GROUND FLOOR	186.32 sqm
FIRST FLOOR	106.52 sqm
TOTAL	292.84 sqm

REV-NO	DATE	DESCRIPTION
01	09-09-2021	
02	04-11-2021	revised as per vaasthu

SPECIAL NOTES

- All the wall thicknesses are 23cms and 13 cms (Unless Specified)
- All the levels marked in the dwg are finished levels
- Refer structural drawings for structural details
- Follow architectural dwgs for dimensions, levels and details.
- All Dimensions are in cm's
- All Dimensions to be checked at site. No dimension to be scaled off from drawings only written dimensions to be .
- This dwg is final as on date. All previous dwgs similar to this stand cancelled.
- Any discrepancies in the drawing shall be brought to the notice of the consultants and corrected before execution.

SCALE 1:100

DATE 04-11-2021

PROJECT NO THP/MP/PC/08/01

DRAWING NO AR-200

DRAFTED BY SUHARA

CHECKED BY Ar SANAK

© this drawing is the property of space art and de earth and is not to be copied or used without their permission.

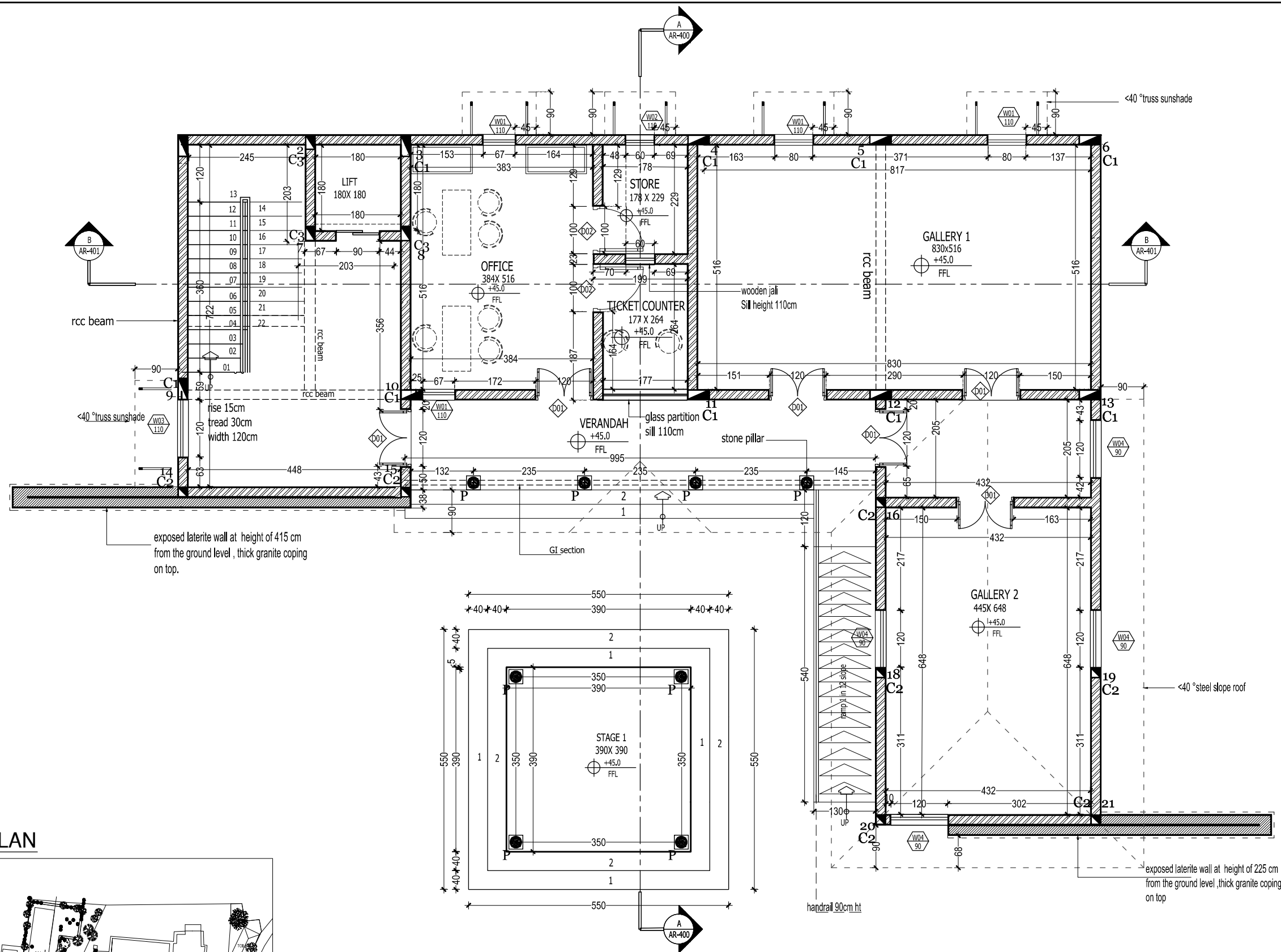
SIGNATURE OF ARCHITECT

ARCHITECTS

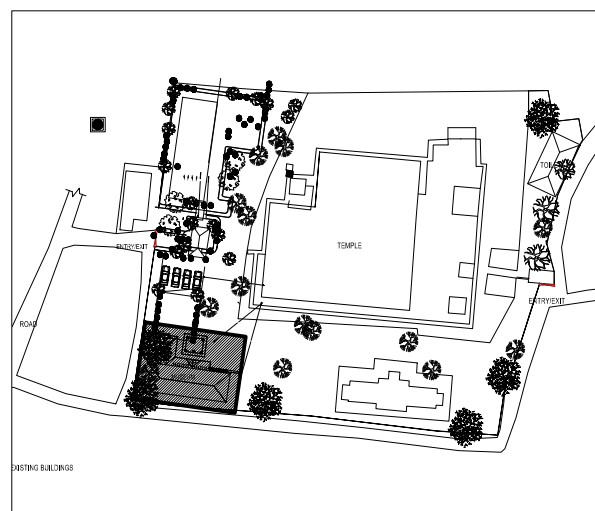
SPACE ART
Architecture & Responsible Tourism
Golf link road, Pachakkil, Malaparamba P.O, Calicut-9
Ph: 0495 2370290
E-mail: mail@spaceart.org.in

de earth

RAGAM APARTMENT, PIPE LINE ROAD PATTERY,
CALICUT-16, PH.0495 2741782.



KEYPLAN



1 GROUND FLOOR PLAN
SCALE: 1:10

- LATERITE MASONRY
- EXPOSED LATERITE MASONRY
- RCC
- ROOF LINE
- RCC BEAM LINE

Project: **MASTER PLAN
THALASSERY HERITAGE PROJECT**

Client : **DEPARTMENT OF TOURISM ,
GOVT. OF KERALA**

Project title : **MUSEUM AT MAKRERI
TEMPLE**

Circuit : **CULTURAL CIRCUIT**

Drawing Title : **WORKING DRAWING**

JOINERY SCHEDULE

TYPE	SIZE	SILL	LINTEL	TYPE	SIZE	SILL	LINTEL
D01	120X210	-	210	D04	80X210	-	210
D02	100X210	-	210				
WINDOW							
W02	60X100	110	210				
W01	80X100	110	210				
W03	120X100	110	210				
W04	120X120	90	210				
W05	370X165	45	210				
PW	1020X80	130	210				
PW1	360X80	130	210				
PW2	490X80	130	210				

AREA CALCULATION

FLOOR	AREA(M ²)
GROUND FLOOR	186.32 sqm
FIRST FLOOR	106.52 sqm
TOTAL	292.84 sqm

REV-NO	DATE	DESCRIPTION
01	09-09-2021	
02	04-11-2021	revised as per vaasthu

SPECIAL NOTES

- All the wall thicknesses are 23cms and 13 cms (Unless Specified)
- All the levels marked in the dwg are finished levels
- Refer structural drawings for structural details
- Follow architectural dwgs for dimensions, levels and details.
- All Dimensions are in cm's
- All Dimensions to be checked at site. No dimension to be scaled off from drawings only written dimensions to be .
- This dwg is final as on date. All previous dwgs similar to this stand cancelled.
- Any discrepancies in the drawing shall be brought to the notice of the consultants and corrected before execution.

SCALE 1:100

DATE 04-11-2021

PROJECT NO THP/MP/PC/08/01

DRAWING NO AR-201

DRAFTED BY SUHARA

CHECKED BY Ar SANAK

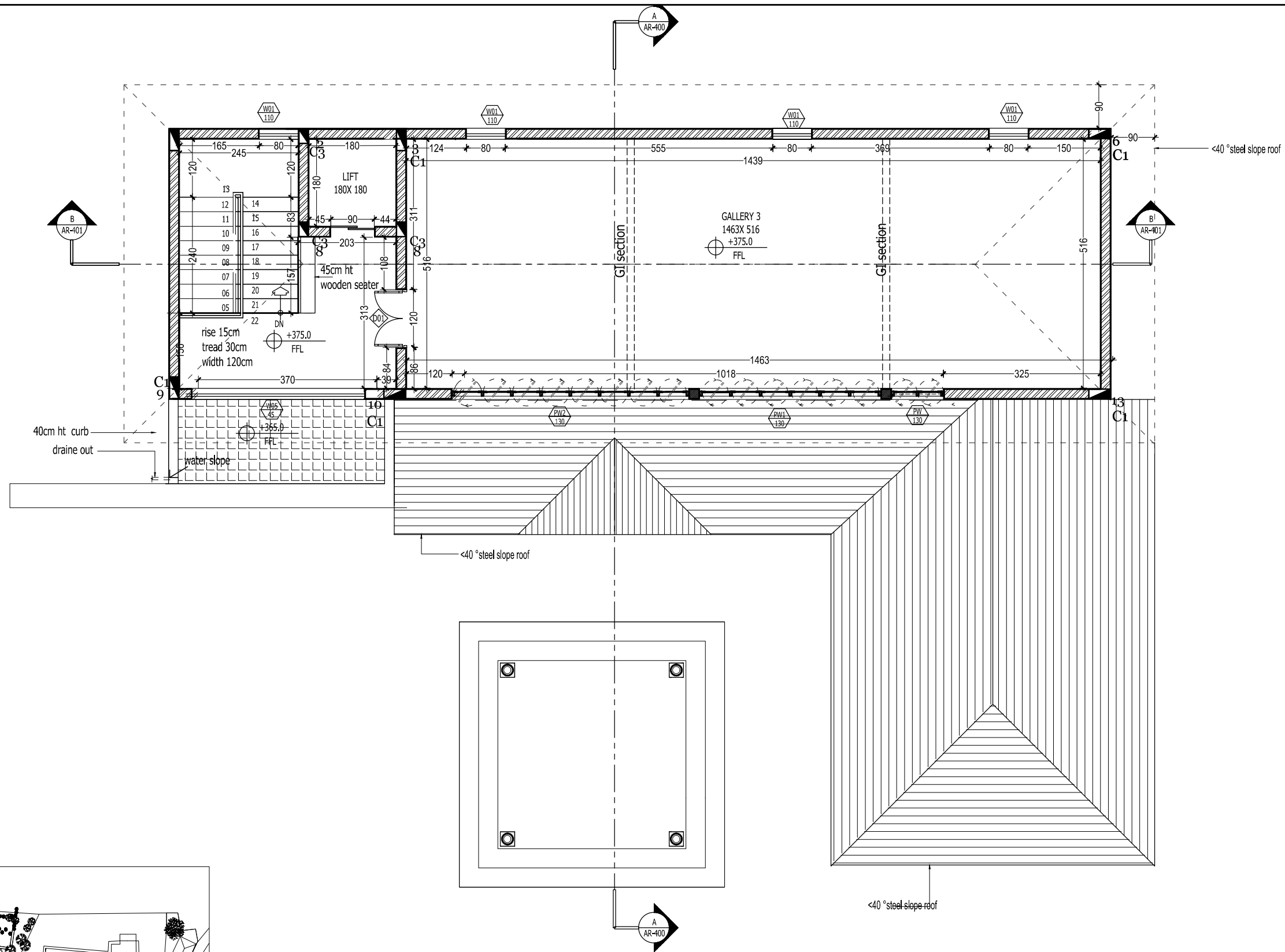
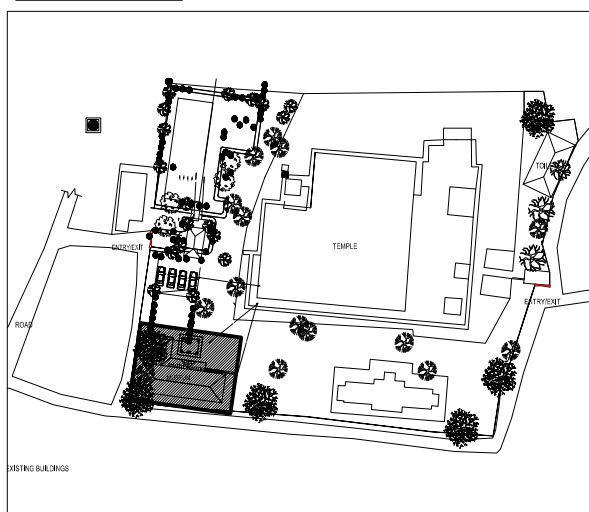
© this drawing is the property of space art and de earth and is not to be copied or used without their permission.

SIGNATURE OF ARCHITECT

ARCHITECTS

SPACE ART
Architecture & Responsible Tourism
Golf link road, Pachakkil, Malaperambra P.O, Calicut-9
Ph: 0495 2370290
E-mail : mail@spaceart.org.in

de earth
RAGAM APARTMENT, PIPE LINE ROAD PATTERY,
CALICUT-16, PH: 0495 2741782.

**KEYPLAN**

2

AR-201

FIRST FLOOR PLAN

SCALE: 1:10

ROOF TILE
LATERITE MASONRY
EXPOSED LATERITE MASONRY
RCC
ROOF LINE