



KERALAM MUSEUM OF HISTORY & HERITAGE

Park View, Thiruvananthapuram-33

(Nodal agency of all museums under Cultural Affairs Dept. Govt. of Kerala)

Website: www.museumkeralam.org | Email: info@museumkeralam.org

Phone: 0471-2320231, +91-9567019037

KIM/103/2014

Date 30/10/2020

REQUEST FOR PROPOSAL

Selection of Museum Consultancy Firm from Empanelled consultants for Refurbishment of galleries at Pazhasiraja Museum, East hill, Kozhikkode

Request For Proposal is invited by Interactive Museum of Cultural History of Kerala (Keralam Museum of History and Heritage) from the Empanelled, reputed, experienced, and competent Consultancy Firms for Refurbishment of galleries at Pazhasiraja Museum, East hill, Kozhikkode. The details relating to the nature and scope of the project, eligibility criteria, terms and conditions and other information relating to the Request For Proposal are as detailed below.

Executive Director
Interactive Museum of Cultural History of Kerala
(Keralam Museum of History and Heritage)

Refurbishment of galleries at Pazhasiraja Museum, East hill, Kozhikkode

Introduction

The Pazhassi Raja Museum is set up in the East Hill Bungalow, which was the official residence and administrative centre of the British Collectors of Malabar. It continued to be the official residence of the Collector of Kozhikode district after Independence, until 1970. The building became the British Collector's residence after the collectors who succeeded Connolly was assassinated in his residence cum-office in the military barracks on West Hill in 1855. Collector Ballard who owned the building since 1870, transferred it to Collector Mc.Gregor in 1874. It was from Mc.Gregor that William Logan took over in 1875. Logan compiled the Malabar Manual here. When Logan demitted office, he gave his successor Darling the power of attorney over the building. Darling sold the building to two wealthy businessmen of Kozhikode, named Koyatty Haji and Chekkottikoya Haji. The collectors who succeeded Logan used the building paying a monthly rent of Rs 150. In 1920, the government bought over the building from the businessmen following a 1918 decision that the Malabar Collector should not operate from privately owned premises.

Since the building was the seat of the British administration since Malabar came under colonial rule, a description indicating the history of the building, its architecture and the use each of its rooms was put to can be displayed in the museum.

It was at Kozhikode that Vasco da Gama anchored his fleet in 1498, marking the onset of European colonization of India. But the rulers of Kozhikode did not permit the Portuguese to strike roots here. The Zamorin [Samootheri] ruler, with the help of Arab traders and Moplah [Muslim] naval forces, drove them south to Cochin and north to Kannur. Malabar became part of the British empire after the third Mysore War of 1790-92, when Tippu Sulthan ceded Malabar under the Srirangapatnam [Serigapatam] treaty. The British, with the aim of bringing about modern governance, began efforts to understand the history, geography and social conditions in Malabar. Under Alber Cromby's leadership, they brought about systemic changes in the system, the most significant among them being in the civil and criminal law administration, the traditional land and tenancy rights and the caste-based work allocations.

The museum story is proposed to be woven around this theme. The narrative could be built up in the following way:

1. The story/history of the museum building:

British ascendancy in Malabar, narrated through colonial records and illustrations

2. The colonial administrative set-up.

changes in trade and communication, setting up of police, jail and courts; reorganization of villages, tehsils and districts in place of 'thara', 'naadu', etc. under the feudal system; the banning of 'vaasi', 'noori', 'vechukanal', 'vilavupaattam', 'vithupaattam', 'acharappanam', 'kaimadakku', etc. and the introduction of the tax system, the arrival of printing, the starting of newspapers and magazines, introduction of communication modes like post and telegraph... These ideas could be presented with the help of maps, copies of documents, objects like shackles, uniforms, post boxes, old newspapers and magazines, early printing presses, teleprinters, Morse code transmitters, etc.

3. Changes in the work front:

Modernisation of labour, introduction of wages for work, introduction of plantation crops, etc., with colonization could be highlighted. The [spices] estate established by Murdoch Brown at Ancharakandy in Kannur was one of the earliest such ventures in the Asian continent. This was followed by coffee and other plantations. Weaving factories and factories making roofing and floor tiles followed. With industries came the system of wages for work. This led to changes in the traditional caste-based vocations. It was when the work opportunity became 'open' and 'common' that the thought of abolishing slavery dawned. In order to showcase this idea, details/data about the plantations in Malabar, documents such as 'mulakkarangal' about slave markets, wage disbursement, the tile and weaving factories, the products they made, etc., are to be compiled. Kuzhithary [pit loom] and handlooms, moulds from tile factories, details about cash and food crops should all be represented. Worth adding to these are replicas of the factories started to rehabilitate the depressed classes who lost their traditional vocations.

4. The socio-cultural and historical planes of the feudal system that began to lose ground with the arrival of colonial administration:

a) Introduce the principalities that existed in Malabar during the feudal era. Maps of the principalities and descriptions about the customs and practices, the honorific titles of the lords, etc., could be listed.

b) Details of important temples that were the cultural heritage of the feudal era through replicas of temples and deities, temple architecture, art, royal decrees granting rights to temples, etc. Also worth display are descriptions of the caste hierarchies that existed under Brahminical control and the rituals related to them.

c) Displays highlighting the ritual practices extant in the feudal era, dress code, different forms of address, details about the distances various castes had to maintain in the caste pecking order, etc.

5. Malabar's links with foreign lands during and before the feudal era:

The trade and maritime relations of Malabar before the arrival of Vasco da Gama. Representation of the more important centres of maritime relations with Arabia and China from the Malabar coast, such as Panthalayani (which early travel historians have recorded as Fandarina), Kollam, Kozhikode, Madai, etc. Also worth featuring alongside are the religions that came with the traders. The antiquities, coins and ancient recovered from these sites, including the 'Payyannur paattu' which mentions 'marakkalam' and the travelogues written in those days are ideal exhibits.

6. Colonial attempts at historiography, and the native research:

A lot of attempts at tracing the ancient history of Malabar had been made during the British colonial period. People like William Logan attempted comprehensive historiography. Babington and the officers who succeeded him shed valuable insights into the pre-history of the region, including the megalithic era. Also worth highlighting are Fred Fawcett studies into the Edakkal Cave petroglyphs, and E. Hultzsch's inquiries into the epigraphy. Indeed, the colonial period studies in history and society are vast, ranging from collecting and publishing records, proverbs, folklore and ballads. Worth highlighting are the relics recovered, and being recovered, about the pre-history and the Megalithic Age.. The contributions of Hermann Gundert are worth highlighting.

7. The resistance of Pazhassi Raja and his tribal cohorts:

The resistance put up by Pazhassi Raja and his Kurichiya (tribal) warriors against colonial aggression in Malabar deserve an exclusive gallery in the museum, which is named after the legendary king. The gallery could rely on the Thalassery records, Pazhassi's own documents, besides British records.

8. Social Reform Movements and agrarian protests:

The Malabar (Moplah) Rebellion, the various agrarian protests against feudal and colonial exploitation in various parts of Malabar, the anti-untouchability /caste agitations, the nationalist movement... all could be highlighted in this section as an adjunct of the colonial era gallery. The approach should be to highlight localized resistances merging to form part of the larger movement. It could be done by displaying newspaper reports, memoirs of participants, biographies of prime movers of those days.

9. The awakening into Malayalee and Keralam:

This gallery should highlight the emergence of the society that had been divided by casteist exploitation and untouchability into a common entity united by language and geography Malayalam and Kerala. The canard that modernisation and unification was a gift of colonial incursion should be disabused. It was actually a process that took place at the micro level at a thousand places throughout the land.

10. Critical Approaches to Colonialism

There is a space to take a critical approach to the developments that have taken place during the colonialism in Malabar in the light of Post colonial thinking. A gallery could be considered highlighting this.

Eligibility Criteria For Application

Those who are Empanelled firms should attend the **Pre-bid meeting**.

Pre-bid meeting date - 10.11.2020 Time - 11 am

Medium of meeting - Online (Zoom/Google meet)

Empanelled Consultants/Firms attending the Pre-bid meeting will get more details about nature and scope of the project, eligibility criteria, terms and conditions and other information relating to the Request For Proposal. Those who are participated in the bid shall pay Rs 5000/- by way of DD drawn in the name of Executive Director, Interactive Museum of Cultural history of Kerala towards cost of documents along with Bid documents in separate cover. Request For Proposal should be submitted on or before 26.11.2020 2 PM. The following details should be enclosed.

Process of Evaluation

1. Technical bid - Evaluation (Maximum 40 marks)

1. History of the Firm - Turn over, when established, full time staff etc

Total - 20 Marks

Up to 3year - 10 marks

Up to 5year - 15 marks

Above 5 year - 20 marks

2. Technical competence - Details of projects done, similar projects executed

Total - 20 Marks

Works executed up to 2crore/2 year - 10 marks

Works executed up to 3crore/2 year - 15 marks

Works executed above 3crore/2 year - 20marks

3. Specific experience - Experience in designing museums or galleries, experience in Kerala

Total - 30 Marks (a + b)

a)1 Work - 10 marks

3 Works - 15 marks

More than 3 Works - 20 marks

b)Weight age marks for work executed in Kerala – 10 marks

4. Understanding of this project brief – a note on their understanding and approach

Total – 30 Marks

The marks shall be given on evaluation of understanding the project brief.

The Marks secured out of 100 will be converted to out of 40 marks. The Technical bid of ALL the firms should be evaluated against total marks of 100. Empanelled firms should submit the full technical bids and 50 % marks may be stipulated as the cutoff. The firm/company who secures at least 50 % of score in the evaluation will be treated as qualified for Technical presentation.

2. Technical Presentation (Maximum 30 marks)

Eligible candidates can participate in the presentation after qualifying Technical bid evaluation.

Medium of Presentation – Offline / Online (Zoom/Google meet)

The technical presentation should be entirely based on the design already prepared.

20 marks - Understanding the brief

20 marks - Respecting the historicity of the building and demonstrative adaptive reuse

20 marks – Understanding the Design flow/strength

20 marks - Economics of design

20 marks - Confidence in executing

Total marks = 100 marks

Awarded marks out of 100 will be converted to out of 30 marks. The firm/company who secure at least 50 % marks (15/30) will be treated as qualification for submitting financial bid.

Those Who secure 50% marks in technical bid evaluation and technical presentation shall be eligible for the bid. The financial bid of those are not eligible shall not opened for competition.

3. Financial Bid (Maximum 30 marks)

The Financial bid should be based on the design and estimate already prepared

Estimate Amount = ₹ 72,88,127 + GST

a) The bidder who secure at least 50% of score in the presentation will be treated as technically qualified.

b) The Financial Bids of the technically qualified bidders will be opened on the prescribed date in the presence of the bidder or their representatives who are authorized by bidder.

c) The lowest financial bidder (L1) will be awarded 100% score. (30 marks)

d) Financial Scores for other than L1 bidders will be evaluated using the following formula:

$$\text{Financial Score of a Bidder} = \frac{\text{Financial Bid of L1} \times 30 \text{ marks}(100\%)}{\text{Financial bid of bidder}}$$

e) Only fixed price financial bids indicating total price for all the services specified in this bid document will be considered.

f) The bid price will include all taxes and levies and shall be in Indian Rupees.

g) Errors & Rectification: Arithmetical errors will be rectified on the following basis: “If there is a discrepancy between the unit price and the total price that is obtained by multiplying the unit price and quantity, the unit price shall prevail and the total price shall be corrected. If there is a discrepancy between words and figures, the amount in words will prevail”.

Combined Evaluation of Technical bid, presentation & Financial Bids

a) The technical bid, presentation and financial scores secured by each bidder will be added using weight age of 40 for technical evaluation, 30 for presentation and 30 for financials respectively to compute a Composite Bid Score.

b) The bidder securing the highest Composite Bid Score will be declared as the Best Value Bidder for award of the Project.

c) In the event the bid composite bid scores are ‘tied’, the bidder securing the highest technical score will be declared as the Best Value Bidder for award of the Project.

d). The successful bidder has to provide a letter of acceptance to Interactive Museum of Cultural History of Kerala (Keralam Museum of History and Heritage, Trivandrum) within seven days of receiving communication about his/her selection from the Department.

e). The successful bidder shall to sign an agreement with payment schedule at the time of award of the work.

f). Keralam Museum of History and Heritage reserves all the rights to accept or reject any/all Request For Proposal applications, without assigning any reason. The Department takes no responsibility for the delay, loss or non-receipt of any submission or letter sent by post, within the prescribed time period.

Conditions and Notes

*Completion of work is 4 months

*Cost of RFP document mentioned above should be in the form of separate Demand Draft in favor of Executive Director Interactive Museum of Cultural History of Kerala, Trivandrum

*Excess over estimate/ below estimate rate shall be allowed by the committees constituted for Museum setting works if necessary.

*DPR details will be available in the Keralam Museum at the Office time. You can contact directly for getting details of the project.

*The drawings and estimates are separately attached along with documents

*The presentation should be entirely based on the design already prepared.

*The Financial bid should be based on the design, drawing and estimate already prepared

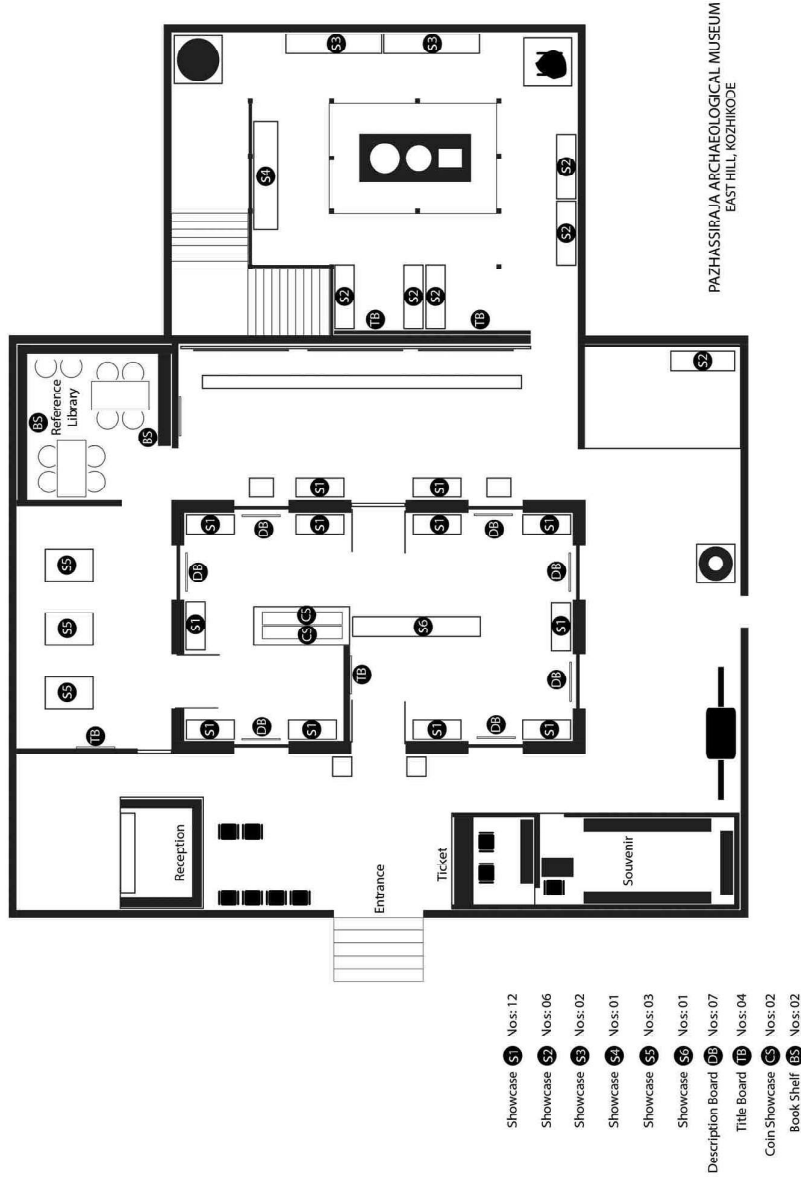
*If the mentioned brand and model equipments is not available in the market, other brands with the equivalent specification can be used at their present market rate

*Lumsum (LS) works enclosed in the estimate can be finalized as per work executed on consulting with Keralam Museum

Application / Request For Proposal in sealed cover with complete details in all respects and superscribed as Selection of Museum Consultancy Firm for Refurbishment of galleries at Pazhasiraja Museum, East hill, Kozhikode shall be submitted at the following address. A soft copy of Presentation shall be sent along with this application. Interested consultants/ consortia of consultants can download the Request For Proposal documents and details from the website

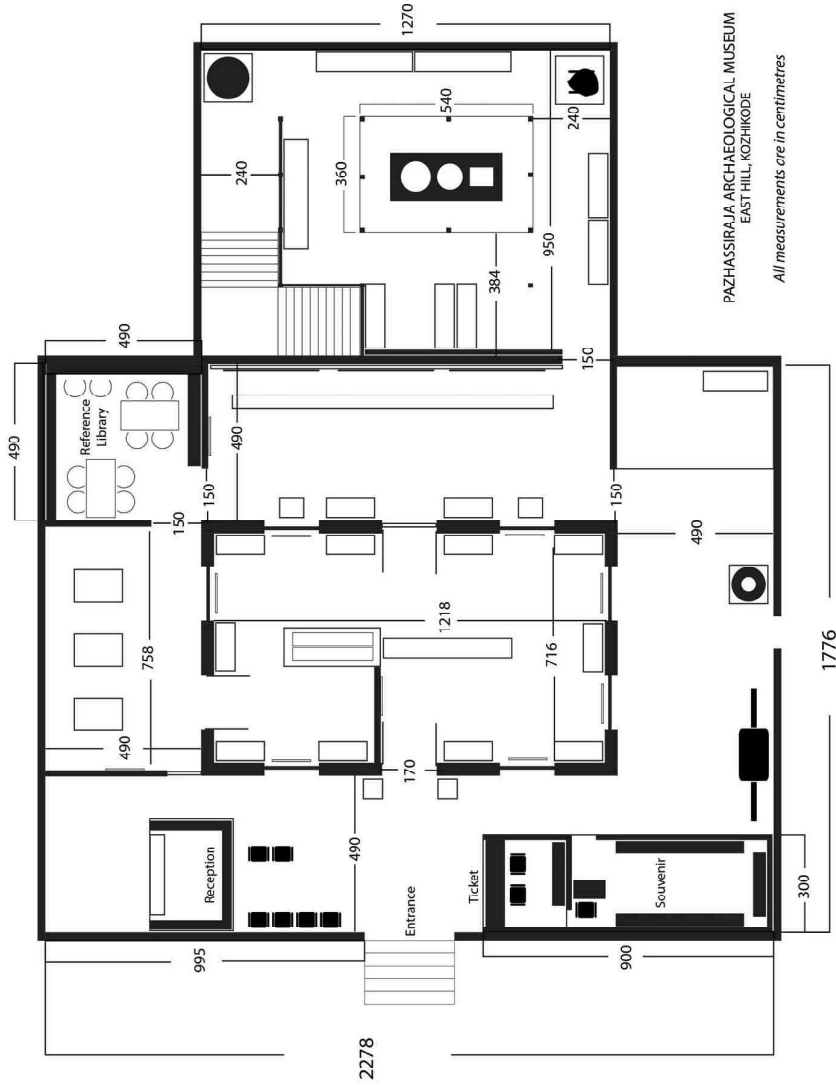
www.museumkeralam.org. The last date for receipt of application (hard copy) is 2 PM on November 26, 2020 and date of presentation is fixed on 30th November

**The Executive Director
Interactive Museum of Cultural History of Kerala
(Keralam Museum of History and Heritage), Park View
Vikas Bhavan P.O,
Trivandrum – 695033.**



PAZHASSIRAJA ARCHAEOLOGICAL MUSEUM
EAST HILL, KOZHIKODE

Lay out



PAZHASSIRAJA ARCHAEOLOGICAL MUSEUM
EAST HILL, KOZHIKODE

All measurements are in centimetres

Measurements

Refurbishment of galleries at Pazhasiraja Museum, East hill, Kozhikkode

Sl no	Description	Unit	Qty	Rate	Amount
1	Showcase work including display of objects				
1.1	Providing fabricating and fixing Showcase With Bottom, sides and top made out of 18mm marine plywood on teak wood framing 25 x 40 mm size and glass case made with toughened 12mm glass of approved make including primer coat, veneer covering, suitable polishing, carriage charges, material cost, labour charges etc as per S3 drawing. Work includes with object display. Showcase size =3.00 x 1.80 x 0.60 m	no	2	67408.76	134817.52
1.2	Providing fabricating and fixing Showcase With Bottom, sides and top made out of 18mm marine plywood on teak wood framing 25 x 40 mm size and glass case made with toughened 12mm glass of approved make including primer coat, veneer covering, suitable polishing, carriage charges, material cost, labour charges etc as per S4 drawing. Work includes with object display. Showcase size =3.40 x 1.80 x 0.75 m	no	1	77178.96	77178.96
1.3	Providing fabricating and fixing Showcase With Bottom, sides and top made out of 18mm marine plywood on teak wood framing 25 x 40 mm size and glass case made with toughened 12mm glass of approved make including primer coat, veneer covering, suitable polishing, carriage charges, material cost, labour charges etc as per S6 drawing. Work includes with object display. Showcase size = 4.00 x 1.80 x 0.60 m	no	1	83580.33	83580.33
1.4	Providing fabricating and fixing Showcase With Bottom, sides and top made out of 18mm marine plywood on teak wood framing 25 x 40 mm size and glass case made with toughened 12mm glass of approved make including primer coat, veneer covering, suitable polishing, carriage charges, material cost, labour charges etc as per S2 drawing. Work includes with object display. Showcase size = 2.00 x 1.80 x 0.60 m	no	6	48902.59	293415.54

1.5	Providing fabricating and fixing Showcase With Bottom, sides and top made out of 18mm marine plywood on teak wood framing 25 x 40 mm size and glass case made with toughened 12mm glass of approved make including primer coat, veneer covering, suitable polishing, carriage charges, material cost, labour charges, locking system etc as per S1 drawing. Work includes with object display. Showcase size = 1.80 x 1.80 x 0.60 m	no	12	44647.06	535764.72
1.6	Providing fabricating and fixing Showcase With Bottom, sides and top made out of 18mm marine plywood on teak wood framing 25 x 40 mm size and glass case made with toughened 12mm glass of approved make including primer coat, veneer covering, suitable polishing, carriage charges, material cost, labour charges, locking system etc as per S5 drawing. Work includes with object display. Showcase size = 1.50 x 1.80 x 0.90 m	no	3	43977.38	131932.14
1.7	Providing fabricating and fixing Showcase With Bottom, sides and top made out of 18mm marine plywood on teak wood framing 25 x 40 mm size and glass case made with toughened 6mm glass of approved make including primer coat, veneer covering, suitable polishing, carriage charges, material cost, labour charges etc as per drawing. Work includes with object display. Showcase size = 2.40 x 1.50 x 0.45 m	no	2	33860.24	67720.48
2	Pedestal work including display of objects				
2.1	Providing fabricating and fixing Pedestal With Bottom, sides and top made out of 18mm marine plywood on wood framing including primer coat, veneer covering, suitable polishing, carriage charges, material cost, labour charges etc as per given drawing. Work includes with object display. Pedestal size = 0.90 x 0.90x 0.90 m	no	4	17307.52	69230.08

2.2	Providing fabricating and fixing Pedestal With Bottom, sides and top made out of 18mm marine plywood on wood framing including primer coat, veneer covering, suitable polishing, carriage charges, material cost, labour charges etc as per given drawing. Work includes with object arrangement if necessary. Pedestal size = 1.63 x 0.98 x 0.90 m	no	1	24079.35	24079.35
2.3	Providing fabricating and fixing Pedestal With Bottom, sides and top made out of 18mm marine plywood on wood framing including primer coat, veneer covering, suitable polishing, carriage charges, material cost, labour charges etc as per given drawing. Work includes with object arrangement if necessary. Pedestal size = 1.65 x 0.98 x 0.90 m	no	2	24639.22	49278.44
2.4	Bottom, sides and top made out of 18mm marine plywood on wood framing including primer coat, veneer covering, suitable polishing, carriage charges, material cost, labour charges etc as per given drawing. Work includes with object arrangement if necessary. Pedestal size = 1.12 x 0.52 x 0.90 m	no	1	13740.2	13740.2
2.5	Providing fabricating and fixing Pedestal With Bottom, sides and top made out of 18mm marine plywood on wood framing including primer coat, veneer covering, suitable polishing, carriage charges, material cost, labour charges etc as per given drawing. Work includes with object arrangement if necessary. Pedestal size = 1.12 x 0.98 x 0.90 m	no	1	17867.32	17867.32
2.6	Providing fabricating and fixing Terra filled table made of marine plywood on wood framing including primer coat, veneer covering, suitable polishing, carriage charges, material cost, labour charges etc as per given drawing. Work includes with object arrangement if necessary size = 10.10 x 0.750 x 0.45 m	no	1	39457.54	39457.54
3	Other museum related works				

1	Providing teak wood work in frames of Handrails, partitions, etc. sawn and fixed in position including material cost, labour cost, carriage charges etc	cum	3.8	114504.8	435118.354
2	Providing and fixing 18 Marine plywood or equivalent make partition on wooden frame including cost of fittings, labour cost, mica finish, painting works etc as per the direction of site	sqm	80	5978.14	478251.2
3	Providing and fixing 18 Marine plywood or equivalent make paneling on wooden frame including cost of fittings, labour cost, mica finish, painting works etc as per the direction of site Engineer-in-charge.	sqm	50	3322.85	166142.5
4	Providing and fixing 12mm toughened glass partitions with suitable joint sealant complete as per the architectural drawings and the directions of Engineer - in -Charge	sqm	15	3764.59	56468.85
5	Wall painting with acrylic emulsion paint of approved brand and manufacture to give an even shade: Two or more coats on new work	sqm	400	110.68	44272
6	Providing and applying white cement based putty of average thickness 1 mm, of approved brand and manufacturer, over the plastered wall surface to prepare the surface even and smooth complet	sqm	400	114.55	45820
7	Wall painting with plastic emulsion paint of approved brand and manufacture to give an even shade: One or more coats on old work	sqm	900	72.41	65169
8	Melamine polishing on wood work (one or more coat)	sqm	350	104.19	36466.5
9	Providing and laying Terra floor tiles of size 200x200mm (thickness to be specified by the manufacturer), of 1st quality conforming to IS : 15622, of approved make laid on 20 mm thick cement mortar 1:4 (1 Cement : 4 Coarse sand), including pointing the joints with white cement and matching pigment etc., complete.	sqm	55	1288.82	70885.1
10	Providing and fixing Vertical blinds for windows	sqm	900	127.77	114993
11	Providing and fixing 18 Marine plywood or equivalent panel work for base of shelves/racks including cost of fittings, labour cost, 4 mm veneer finish, painting works etc as per the direction of site Engineer-in-charge.	sqm	30	5124.62	153738.6
4	Demolishing work	LS	1	80000	80000

5	Furniture including Tables, chairs etc	LS	1	500000	500000
6	Interactive including information kiosk, touch screen, projection etc	LS	1	1200000	1200000
7	Curation	LS	1	300000	300000
8	Gallery boards including texts, labels etc in accordance with thematic display				
1	Providing Display boards with Acrylic sheet and wooden framing with 6ft x 3ft size including cost of conveyance, labour charges, fixing charges, transportation cost, material cost etc.	no	15	8885.48	133282.2
2	Providing Display boards with Acrylic sheet and wooden framing with 6ft x 2ft size including cost of conveyance, labour charges, fixing charges, transportation cost, material cost etc.	no	10	5970.11	59701.1
3	Providing Title boards with Acrylic sheet and wooden framing with 1.5ft x 0.60 ft size including cost of conveyance, labour charges, fixing charges, transportation cost, material cost etc.	no	65	1440.26	93616.9
9	Branding	LS	1	150000	150000
10	General electrification for lighting, supply of pedestal fans etc	LS	1	250000	250000
11	Museum lighting				
1	Halcyon Lighting - Recessed Spot Light - 5 watt - 2700K - IP20 - CRI 80	no	50	3781.84	189092
2	Halcyon Lighting - Hanging Pendant - 15 Watt - IP 20 - 3000K	no	4	5161.71	20646.84
3	Supply and fixing YYZ Lighting - LFX 9.6 watt/Meter - 2700K - Ip 20 CRI 80+	m	120	980.31	117637.2
4	Providing Driver Meanwell PSU 12 x 24	no	5	626.05	3130.25
5	Supplying aluminium profile with PMMA Diffuser	m	120	360.07	43208.4
6	Supplying meanwell PSU 35 x 24V	no	10	1106.91	11069.1
7	Supplying meanwell PSU 24 x 24V	no	10	998.89	9988.9
8	Providing Driver- Meanwell PSU LPV 60-24	no	5	1296.23	6481.15
9	Providing Driver - Meanwell PSU 12 x 24	no	5	626.05	3130.25
10	Meanwell PSU 24 x 24V driver	no	5	998.89	4994.45
11	Providing 4 Phase Track 1000mm	no	15	2177.81	32667.15
12	Providing 3 Phase Track 2000mm	no	10	4225.54	42255.4
13	Single Phase Track 2000mm for Halcyon Lighting - Mini - 8 Watt - IP 20 - 3000K -	no	10	1441.42	14414.2
14	Halcyon Lighting - Mini - 8 Watt - IP 20 - 3000K -	no	40	3781.84	151273.6
15	Fittings including L angle, connector, End cap, fishwire etc	no	1	116150	116150

12	Restoration of photographs, other contents if any	LS	1	200000	200000
13	Artistic works	LS	1	350000	350000
					7288126.8

I agree to execute the work at
Estimate rate / _____% below / _____% above

Consultant